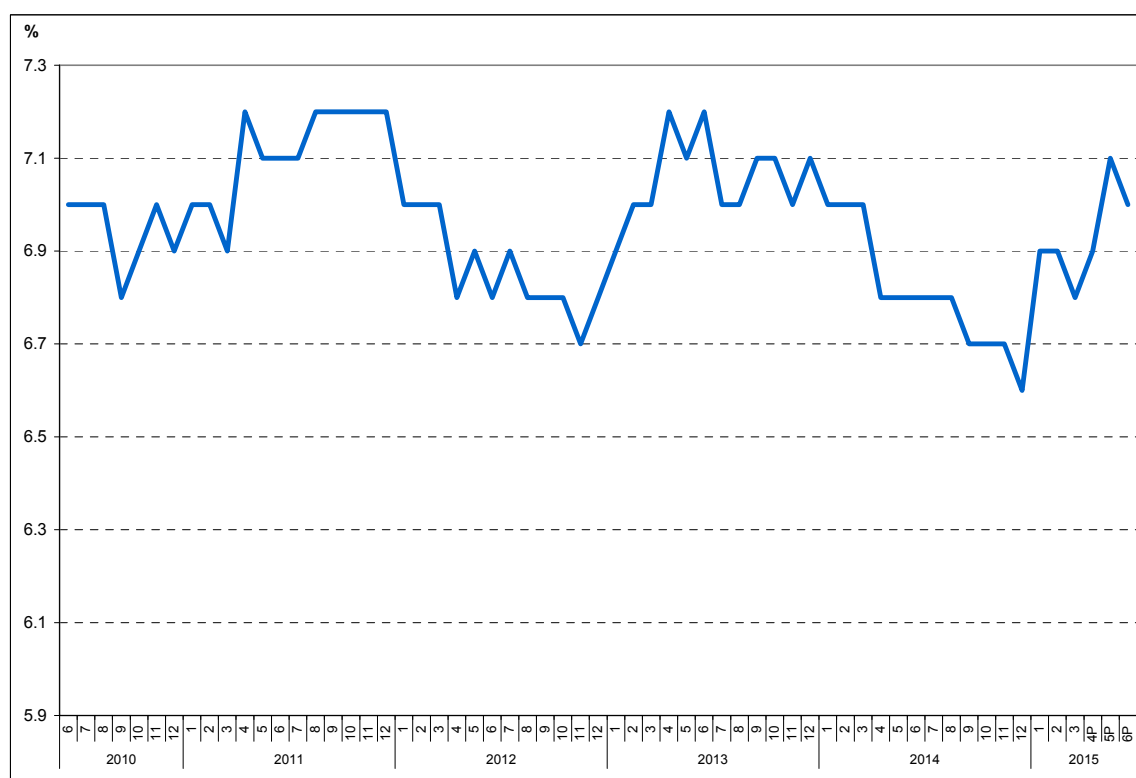


Area: ILO unemployment

In June 2015, the seasonally adjusted unemployment rate was estimated at 7.0%

- Unemployment rate in June 2015 decreased with 0.1 percentage points as compared to the previous month.
- Men's unemployment rate is higher than that of women with 2.0 percentage points.

Evolution of the unemployment rate



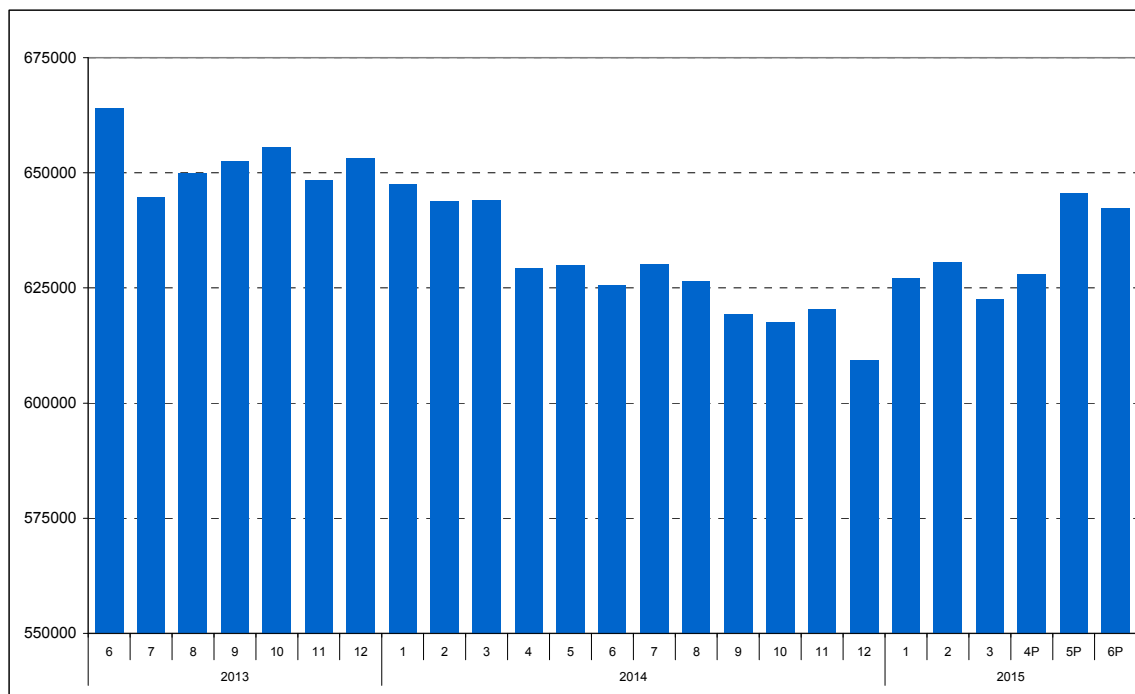
^P Provisional series; will be revised at the end of August 2015 (see point 6 in [Methodological explanations](#)).

[Chart data \(xls\)](#)

Seasonally adjusted unemployment rate decreased with 0.1 percentage points as compared to the previous month and increased with 0.2 percentage points as compared to the level recorded in June 2014.

The number of unemployed (aged 15-74 years) estimated for June current year is of 642 thousand persons, decreasing as compared to the previous month (646 thousand persons) and increasing as compared to the same month of the previous year (626 thousand persons).

Number of unemployed during June 2013 - June 2015 period



^P Provisional series; will be revised at the end of August 2015 (see point 6 in [Methodological explanations](#)).

[Chart data \(xls\)](#)

According to the breakdown by gender, men's unemployment rate is with 2.0 percentage points higher than that of women (the values concerned are 7.9% for men and 5.9% for women).

Unemployment rate by gender (%)

	2014							2015					
	Jun.	Jul.	Aug.	Sept.	Oct.	Nov.	Dec.	Jan.	Feb.	Mar.	Apr. ^P	May ^P	Jun. ^P
Total													
15-74 years	6.8	6.8	6.8	6.7	6.7	6.7	6.6	6.9	6.9	6.8	6.9	7.1	7.0
25-74 years	5.4	5.5	5.4	5.4	5.3	5.4	5.2	5.5	5.5	5.4	5.5	5.6	5.6
Male													
15-74 years	7.3	7.3	7.3	7.1	7.1	7.1	6.9	7.5	7.5	7.4	7.6	7.8	7.9
25-74 years	5.9	6.0	5.9	5.8	5.8	5.8	5.7	6.1	6.1	6.1	6.2	6.3	6.5
Female													
15-74 years	6.1	6.1	6.1	6.1	6.1	6.1	6.1	6.1	6.0	6.0	6.0	6.2	5.9
25-74 years	4.8	4.8	4.8	4.8	4.7	4.8	4.7	4.7	4.7	4.6	4.6	4.7	4.5

^P Provisional series; will be revised at the end of August 2015 (see point 6 in [Methodological explanations](#)).

[Table data \(xls\)](#)

The unemployment rate of adult persons (aged 25-74 years) was estimated at 5.6% for June 2015 (6.5% in the case of men and 4.5% in that of women's).

The number of unemployed aged 25-74 years accounts for 73.9% of the total number of unemployed estimated for June 2015.

Additional information:

For an accurate interpretation of the indicators, please see the [Methodological explanations](#).

Monthly data on the number of unemployed and the unemployment rate with monthly periodicity according to international definition (ILO) can also be obtained from the publication "Monthly Statistical Bulletin No. 6/2015".

The next press release, which will include the estimates for July 2015, will be issued on the 1st of September 2015.
Press release archive: <http://www.insse.ro/cms/en/content/press-releases>.

Communication Department

e-mail: birou presa@insse.ro

Tel: +4021 3181868